

Medit Scanner Instructions (Suggested Workflow)

Pre-Scan Instructions

Step 01


From the "Case box", select "New case".


Step 02

Enter Patient Name, and select "Register & Scan".

New Case Information

Patient Name*

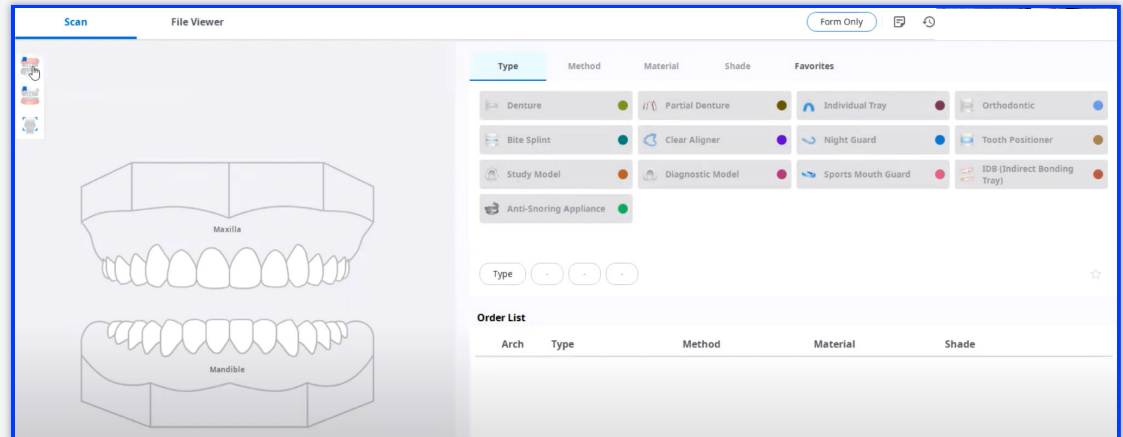
 

 A new patient will be registered.

Case Name*

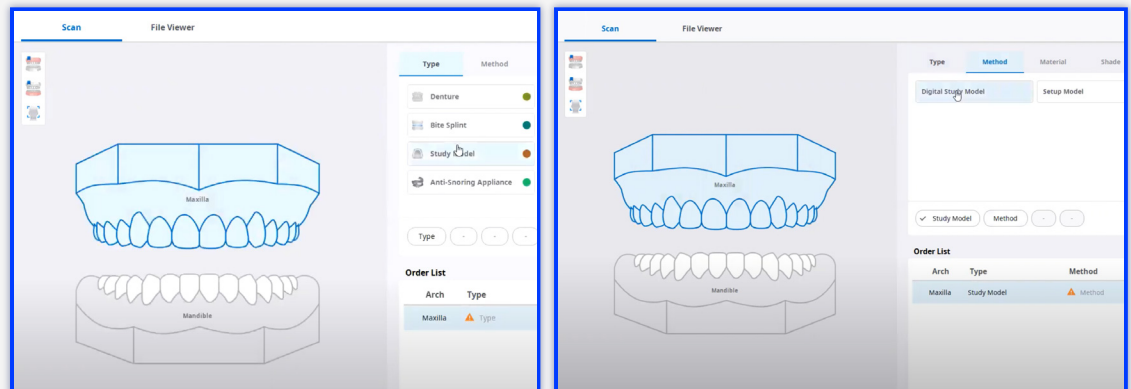
Step 03

Under "Scan", "Orthodontic Appliance" is the suggested "Type".



Step 04

Click on the "Maxilla", select "Study Model" and "Digital Model". Repeat for the mandibular arch by clicking on "Mandible", "Study Model" then "Digital Model".



Step 05

Initiate scan.

Scan Instructions

Step 01

Scan patient's lower and upper arches, and obtain a single occlusion scan as described in the [Proclaim Scanning Guide](#). It is recommended to skip the second occlusion.

Step 02

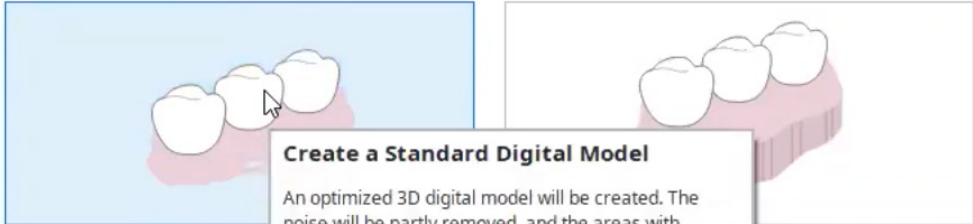
Post-process case. Select "Standard digital model".

Data processing will start.

✓ Please check the following conditions before the data processing starts.

- All required scan stages are complete. [View More](#)
- There was no missing data while scanning the important and necessary areas. [View More](#)
- There was enough reliable data shown on the Reliability Map. [View More](#)
- Unnecessary soft tissues have been properly removed. [View More](#)

Please select the options.



Create a Standard Digital Model

An optimized 3D digital model will be created. The noise will be partly removed, and the areas with insufficient data will remain as empty spaces. Adjust "File Size" and "Surface Roughness" options in the Settings panel, if necessary.

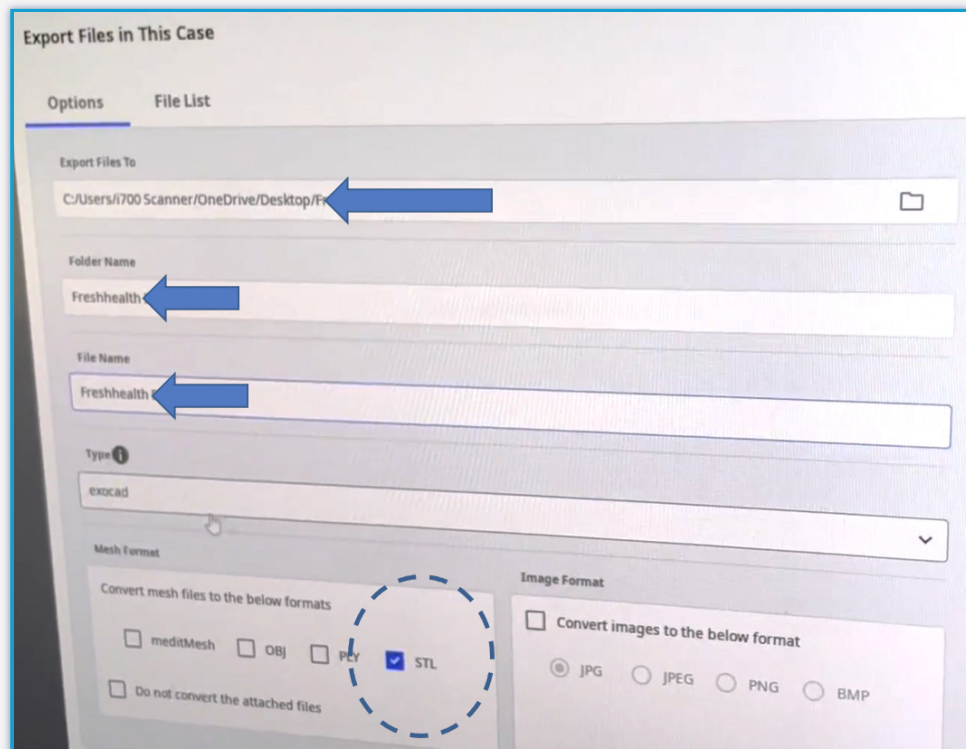
Cancel

Exporting STL files

Step 01

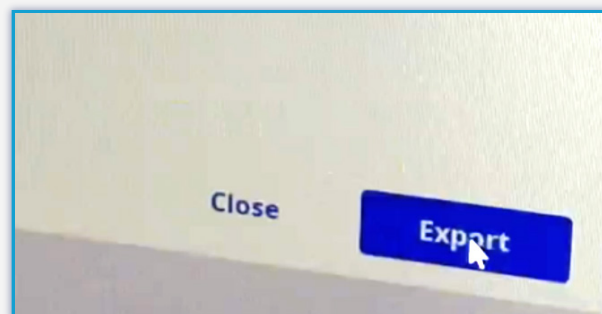
Select "Export".

In the options tab, enter the location where files should be saved in "Export Files To". Enter the folder name, and File name. For File type, select "Exocad". For mesh format, select "STL".



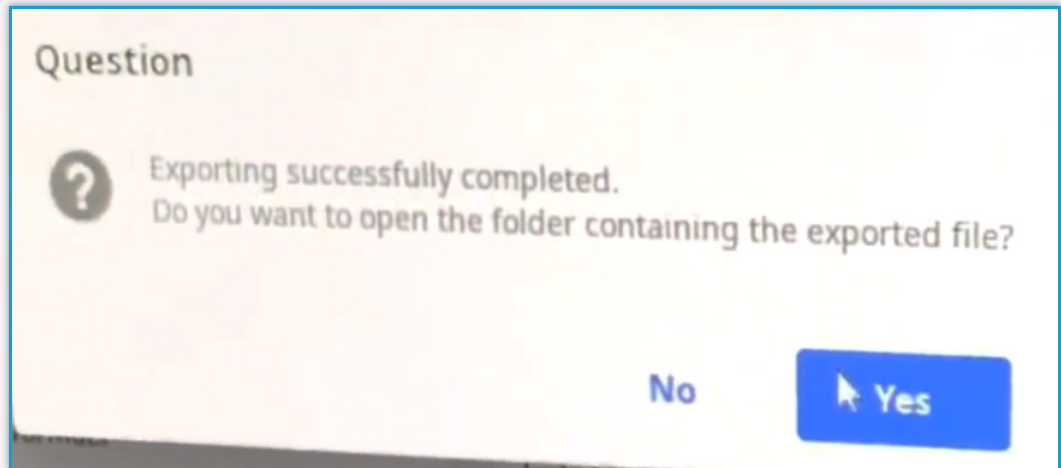
Step 02

Select "Export".



Step 03

If you would like to see the files within your selected folder, select "Yes" when prompted by the pop-up.



Uploading to Proclaim Connect

Step 01

Log into [Proclaim Connect](#) and follow [this link](#) for instructions on how to upload scans.